



iMETOS LoRa TeraTerm terminal app

Example guide

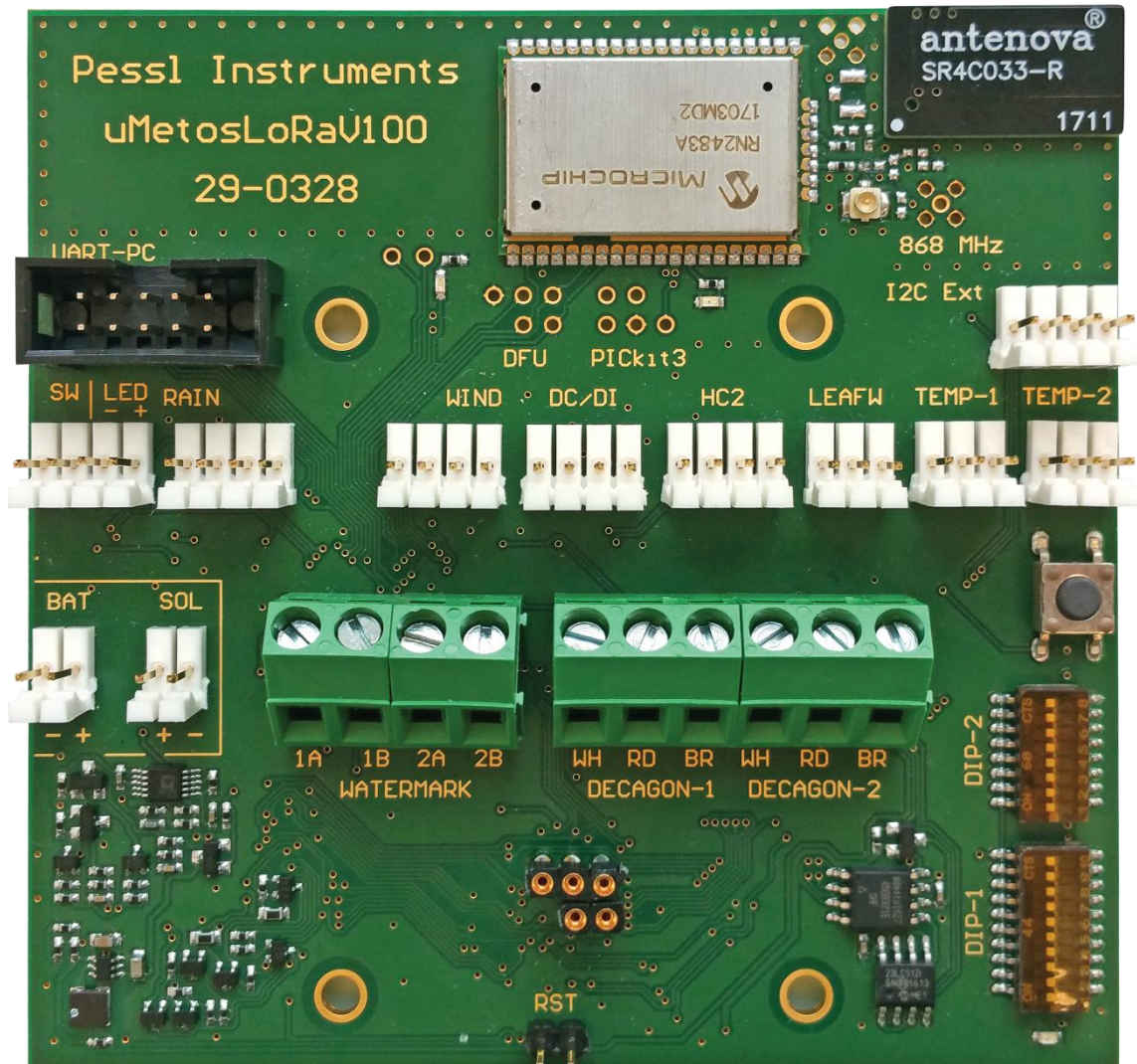
Pessl Instruments, GmbH

Version 1.1, 06-2018

Content

1. TOP VIEW OF THE IMETOS LORA BOARD	2
2. CONNECTING THE IMETOS LORA BOARD TO THE PC.....	4
3. ACCESSING THE TERMINAL MENU	5
3.1 EXAMPLE OF SETTING UP TERATERM TERMINAL APPLICATION.....	5
4. GUIDE REVISIONS	8

1. Top view of the iMETOS LoRa board



Picture 1 - Top view of the iMETOS LoRa board (29-0328)



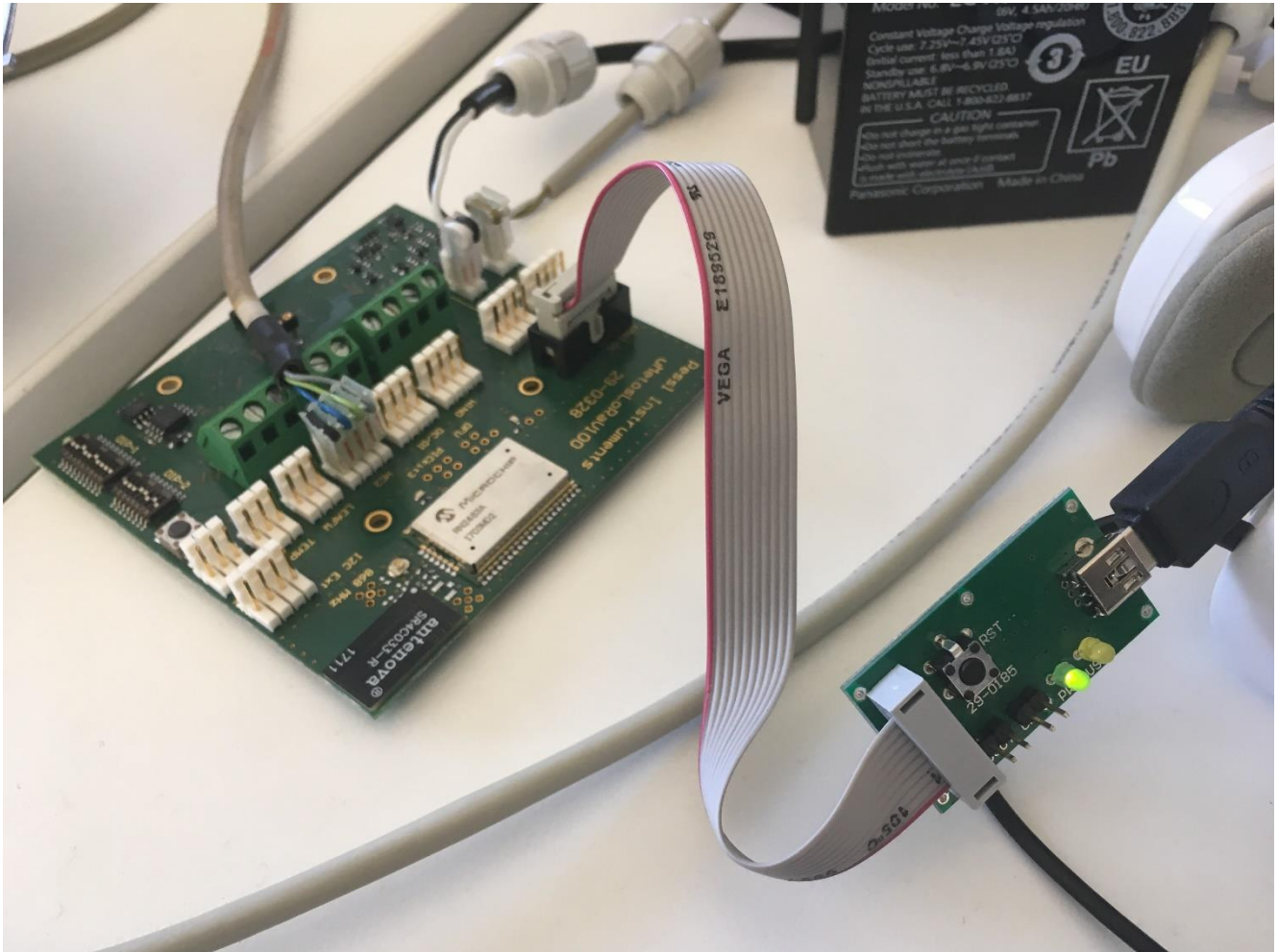
- | | | |
|--|---|-------------------------------------|
| 1. PC terminal connector | 7. Leaf wetness sensor or pressure switch | 13. Connector for 2 Decagon sensors |
| 2. External communication button with blue LED | 8. Extra temperature sensor | 14. I2C External connector |
| 3. Rain gauge or flow meter | 9. Extra temperature sensor | 15. DIP-1 |
| 4. Wind Speed sensor | 10. Lithium primary battery | 16. DIP-2 |
| 5. Duty Cycle sensor or Digital input | 11. Solar panel | 17. Connect button |
| 6. HC2 temperature & relative humidity | 12. Connector for 2 Watermark sensors | 18. LoRa module |
| | | 19. On-board LoRa antenna |

Picture 2 - Connectors on the iMETOS LoRa board (29-0328)

2. Connecting the iMETOS LoRa board to the PC

In order to access the terminal menu, user needs to connect the serial cable to the UART – PC (picture 2, connector 1) 10 pin connector on the iMETOS LoRa board and the other end to the USB port of the PC.

The iMETOS LoRa board needs to be connected to the power source (battery).



Picture 3 - Connected serial cable to the iMETOS LoRa board

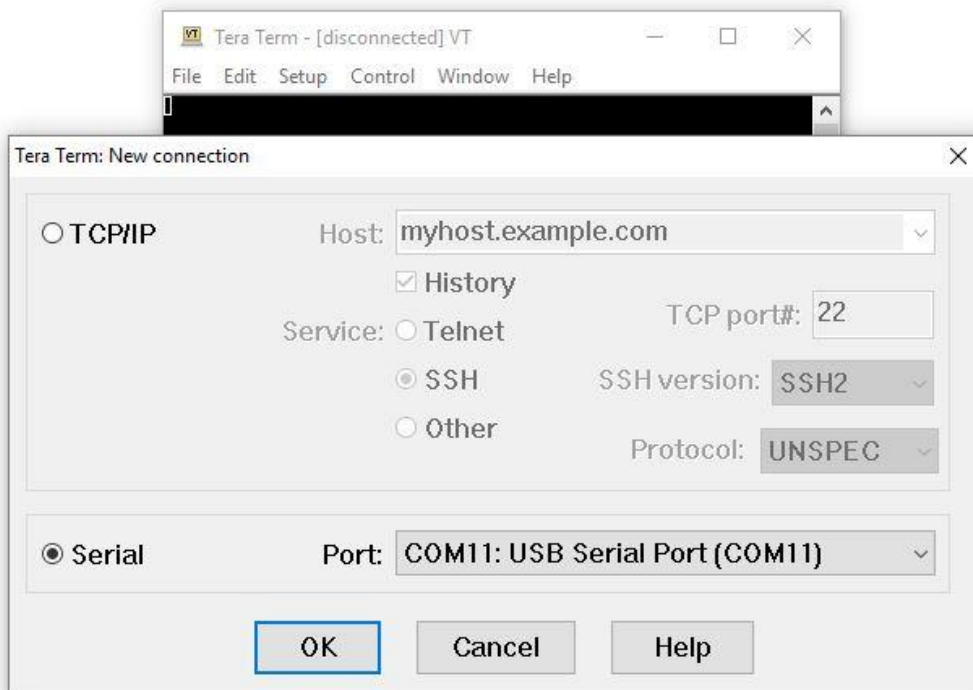
3. Accessing the terminal menu

Serial port settings

- Baud rate 38400 bps
- Data byte 8 bits
- Start bit 1 bit
- Stop bit at least 1 bit
- Parity None

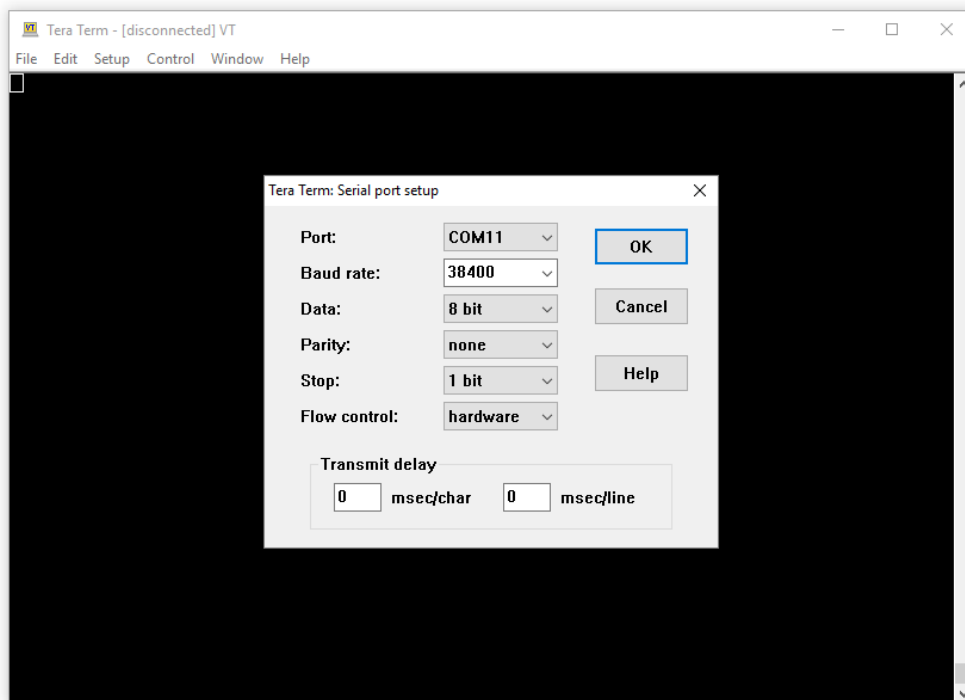
3.1 Example of setting up TeraTerm terminal application

1. Select the appropriate Serial port



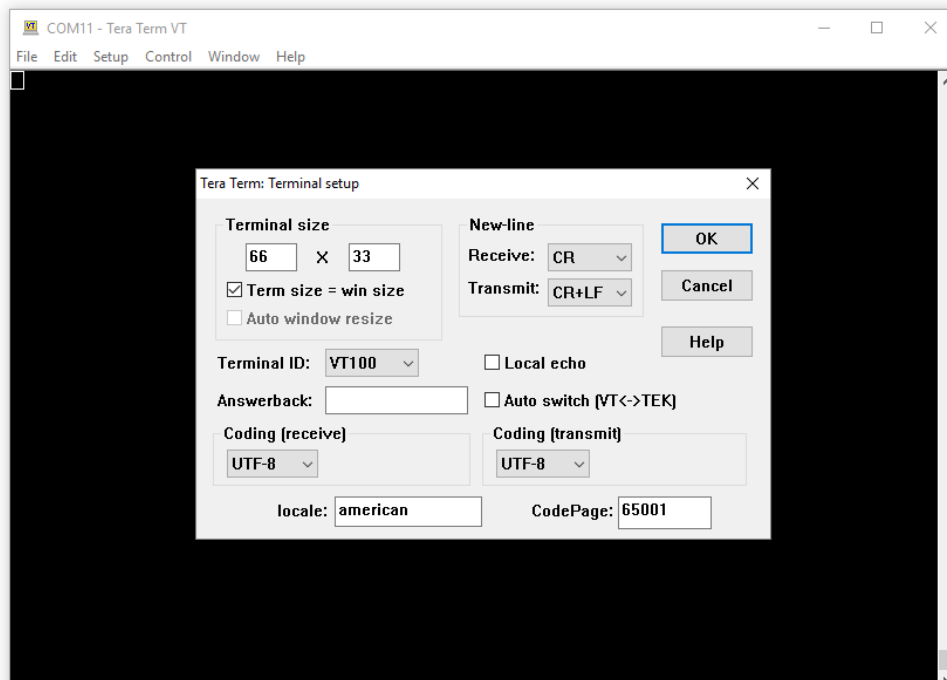
Picture 4 - Select the Serial port

2. Navigate to Setup > Serial port and set the correct settings



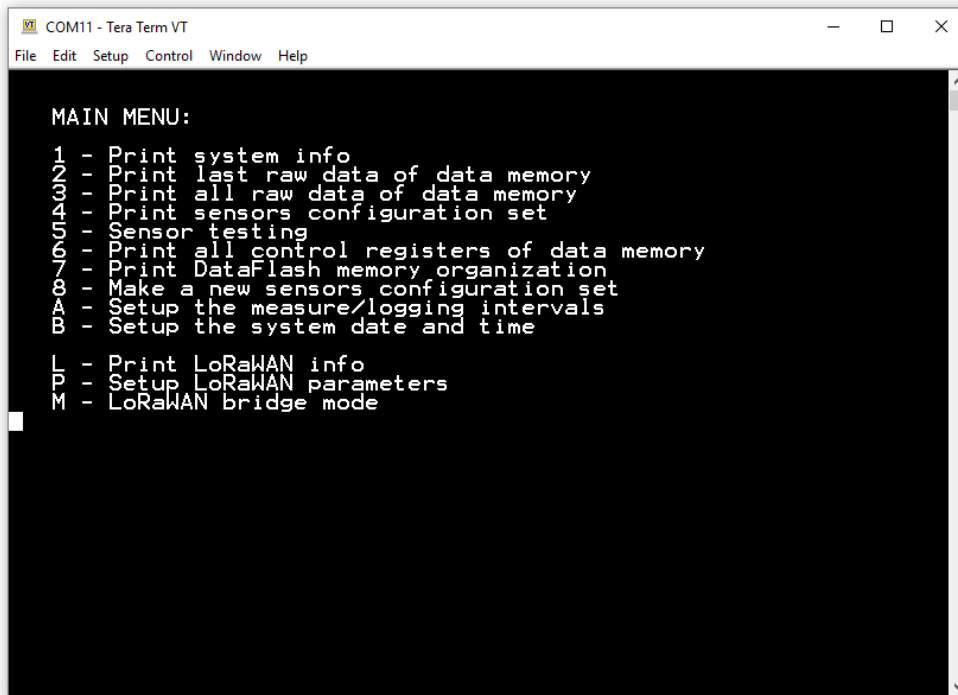
Picture 5 - Setting up correct serial port settings

3. Select Setup > Terminal and set New-line Transmit: CR+LF



Picture 6 - Setting up the line end format on Transmit

4. Press H to see the menu



```
COM11 - Tera Term VT
File Edit Setup Control Window Help

MAIN MENU:

1 - Print system info
2 - Print last raw data of data memory
3 - Print all raw data of data memory
4 - Print sensors configuration set
5 - Sensor testing
6 - Print all control registers of data memory
7 - Print DataFlash memory organization
8 - Make a new sensors configuration set
A - Setup the measure/logging intervals
B - Setup the system date and time

L - Print LoRaWAN info
P - Setup LoRaWAN parameters
M - LoRaWAN bridge mode
```

Picture 7 - Main menu of the iMETOS LoRa device

4. Guide revisions

GUIDE VERSION	MODIFICATIONS
1.10	- Renaming.
1.00	- First release of the document.