



iMETOS NB-IoT TeraTerm terminal app

Example guide

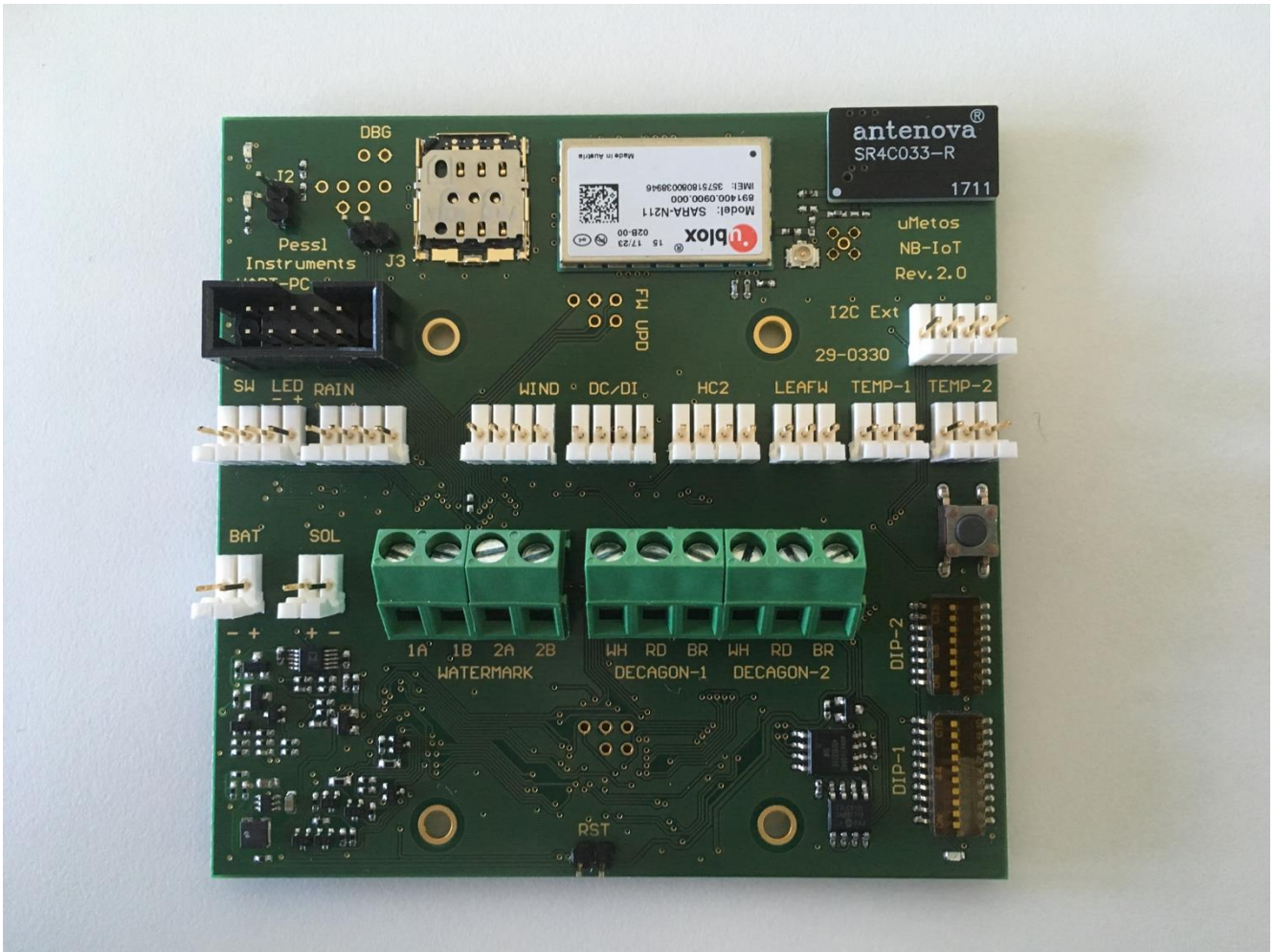
Pessl Instruments, GmbH

Version 1.0, 09-2017

Content

1. TOP VIEW OF THE IMETOS NB-IOT BOARD	2
2. CONNECTING THE IMETOS NB-IOT BOARD TO THE PC	3
3. ACCESSING THE TERMINAL MENU	4
3.1 EXAMPLE OF SETTING UP TERA TERM TERMINAL APPLICATION	4
4. GUIDE REVISIONS	7

1. Top view of the iMETOS NB-IoT board

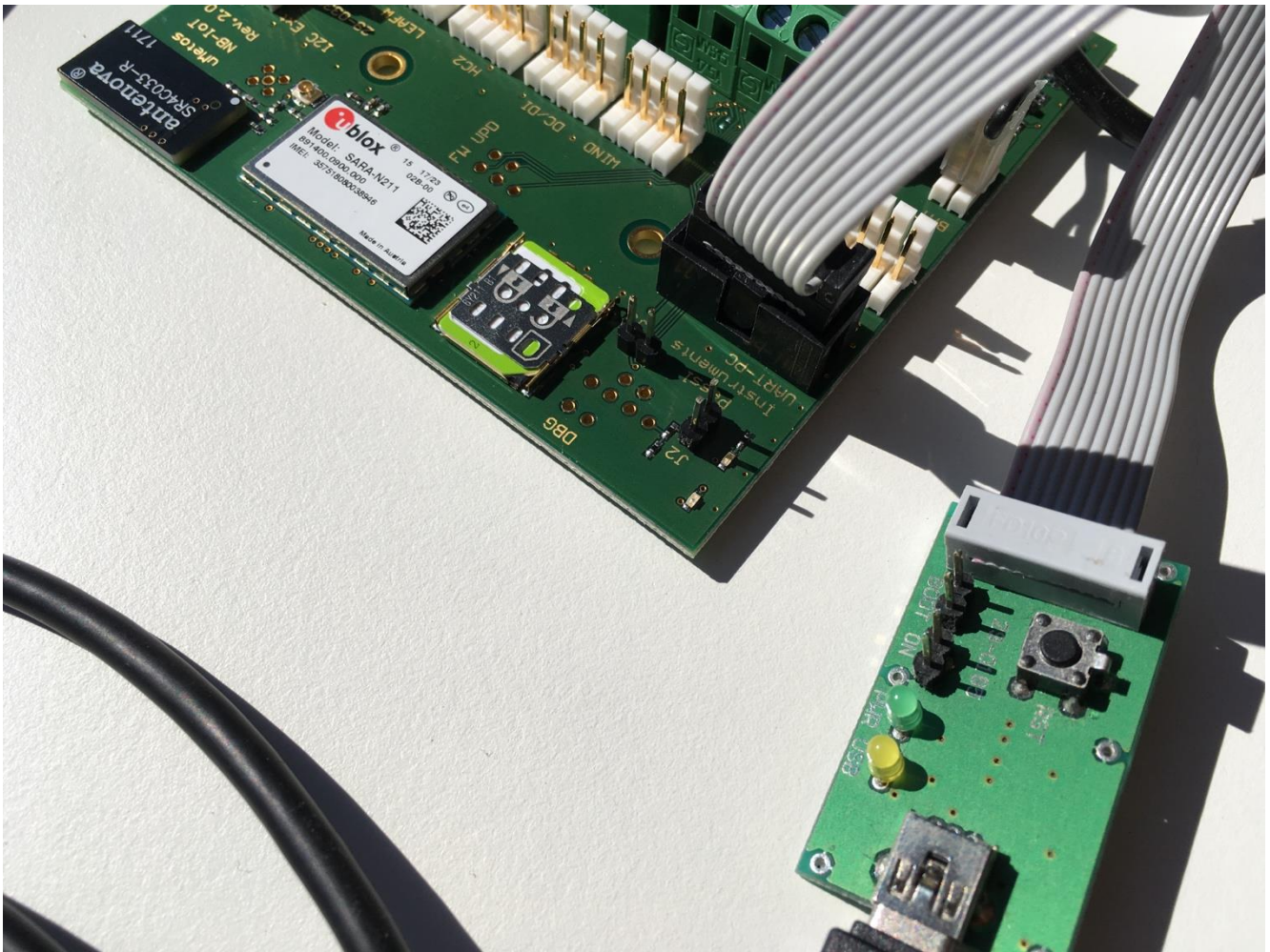


Picture 1 - Top view of the iMETOS NB-IoT Rev. 2.0 board (29-0330)

2. Connecting the iMETOS NB-IoT board to the PC

In order to access the terminal menu, user needs to connect the serial cable to the UART – PC 10 pin connector on the iMETOS NB-IoT board and the other end to the USB port of the PC.

The iMETOS NB-IoT board needs to be connected to the power source (battery).



Picture 2 - Connected cable to the iMETOS NB-IoT board

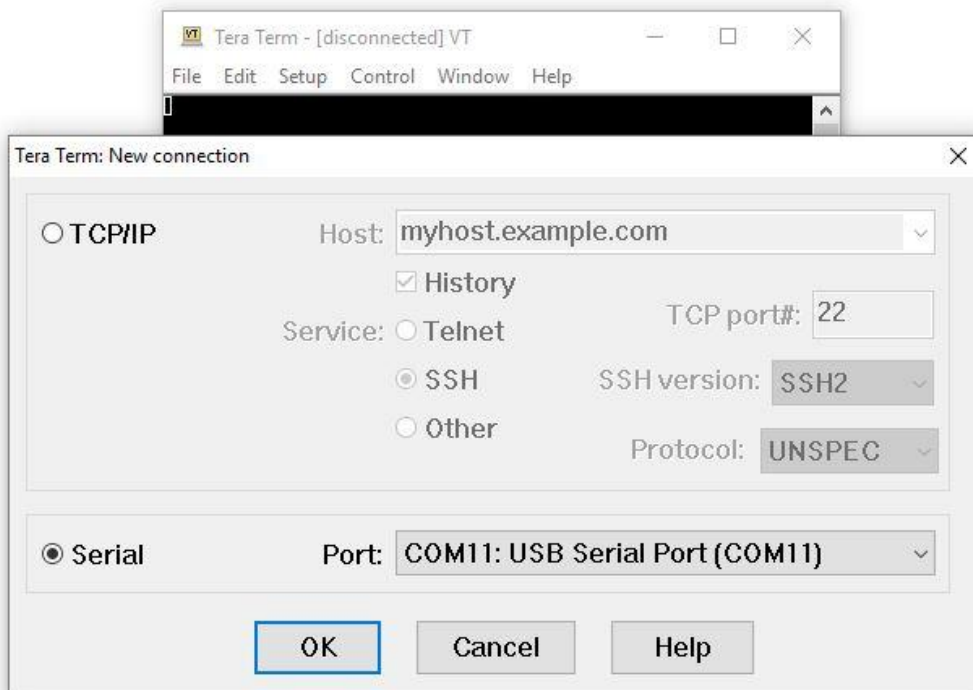
3. Accessing the terminal menu

Serial port settings

- Baud rate 9600 bps
- Data byte 8 bits
- Start bit 1 bit
- Stop bit at least 1 bit
- Parity None

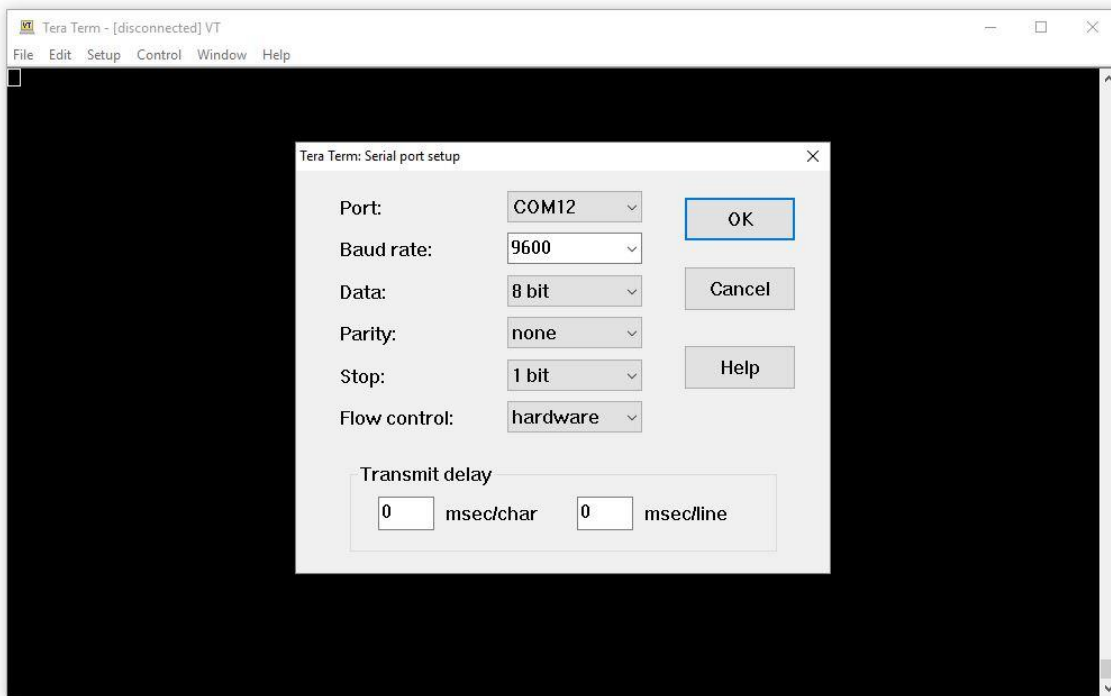
3.1 Example of setting up TeraTerm terminal application

1. Select the appropriate Serial port



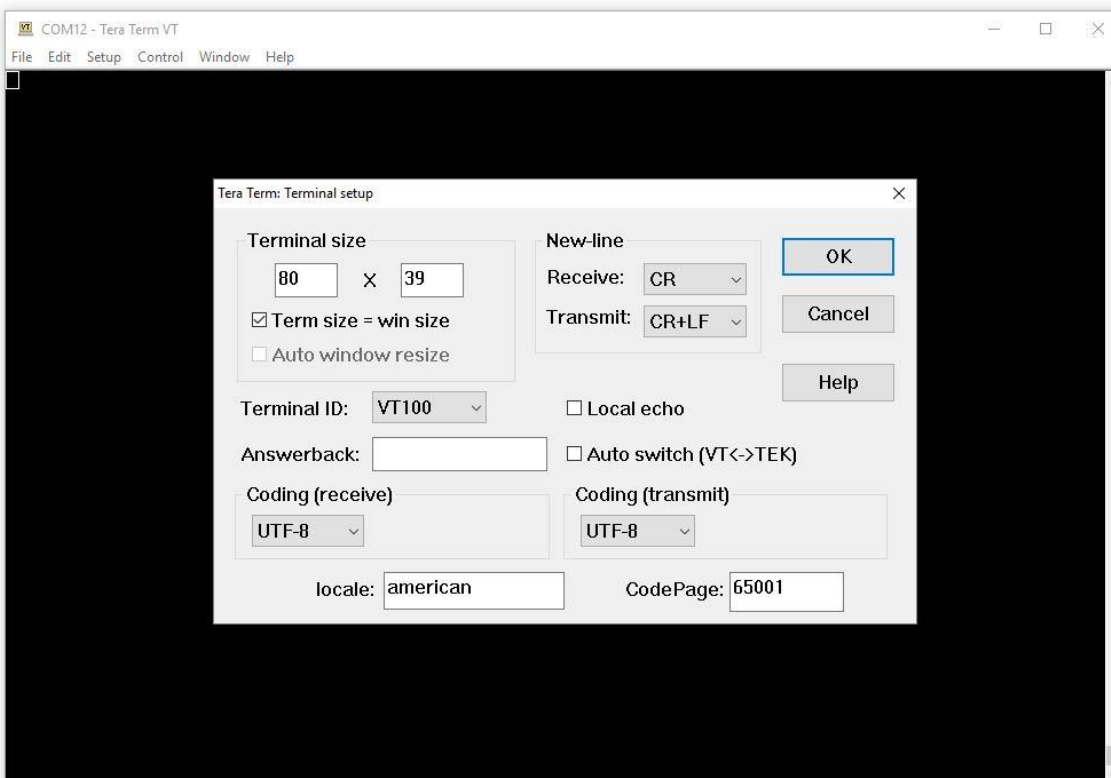
Picture 3 - Select the Serial port

2. Navigate to Setup > Serial port and set the correct settings



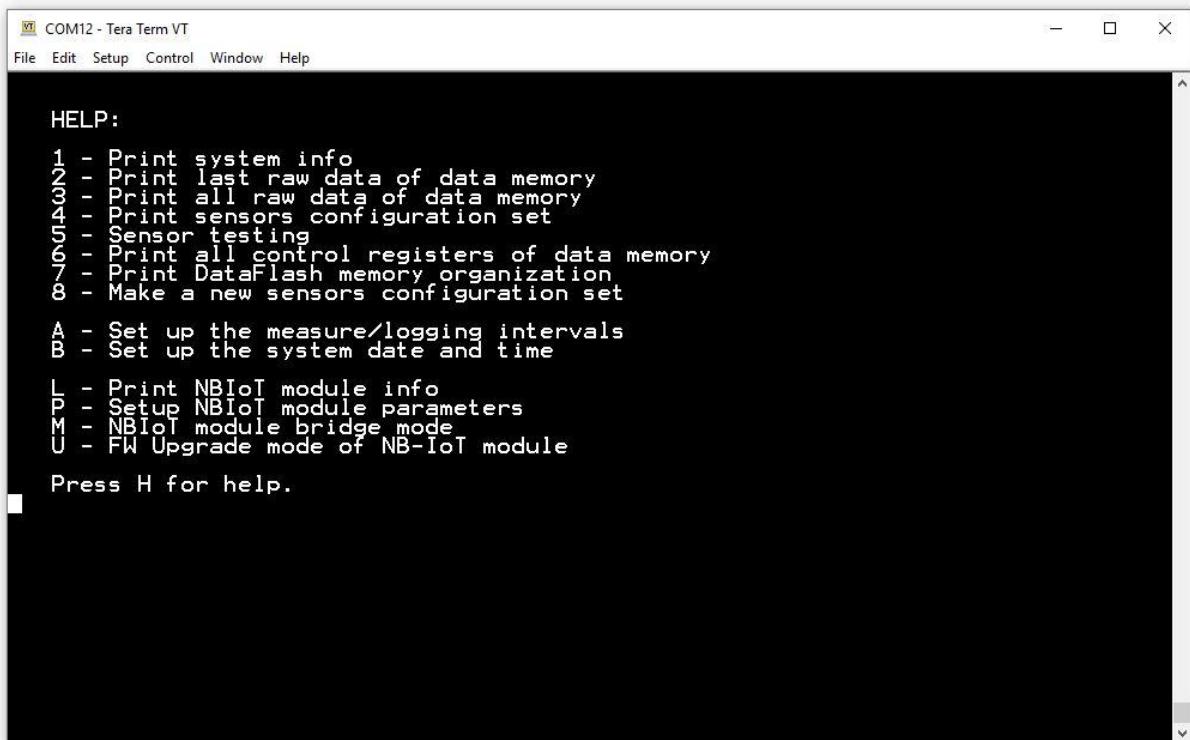
Picture 4 - Setting up correct serial port settings

2. Select Setup > Terminal and set New-line Transmit: CR+LF



Picture 5 - Setting up the line end format on Transmit

3. Press H to see the menu



```
COM12 - Tera Term VT
File Edit Setup Control Window Help

HELP:
1 - Print system info
2 - Print last raw data of data memory
3 - Print all raw data of data memory
4 - Print sensors configuration set
5 - Sensor testing
6 - Print all control registers of data memory
7 - Print DataFlash memory organization
8 - Make a new sensors configuration set

A - Set up the measure/logging intervals
B - Set up the system date and time

L - Print NB-IoT module info
P - Setup NB-IoT module parameters
M - NB-IoT module bridge mode
U - FW Upgrade mode of NB-IoT module

Press H for help.
```

Picture 6 - Main menu of the iMETOS NB-IoT device

4. Guide revisions

GUIDE VERSION	MODIFICATIONS
1.00	- First release of the document.